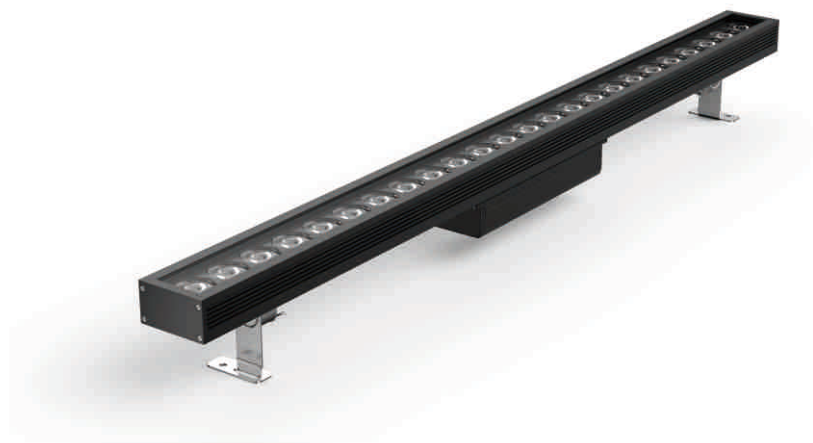
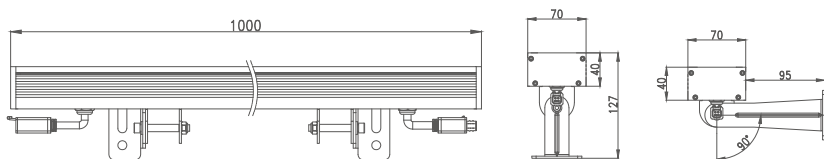


## XD-70-01/LED wall washer



Size:



## XD-70-01/LED wall washer

Features:

1. Minimalist lamp body with design patent conforms to modern industrial aesthetic standard
2. The whole structure waterproof adopts the new patented technology and technology of extrusion silicone strip
3. Square quick waterproof connector adopts patent technology of automobile piston type with nano breathing valve
4. Adopt the precise light distribution technology exclusive to wall washing lamp and 93% light transmittance ultra white toughened glass
5. 304 stainless steel with locking function damping rotating bracket with patented technology as standard

Parameter:

Lamp Parameter		LED parameter	
Beam Angle	6° 10° 20° 40° 60°	LED chip	Cree
Case material/color	Aviation grade aluminum alloy(Grey)	LED Item	XPL/XML
Cover material/color	Ultra clear white tempered glass	CCT	Single color/RGBW
IP rate	IP66 structure waterproof	LED Life	10W
Lamp Power	120W	Other Parameter	
Input Voltage	AC85-265V	Cable size	3 pins 1.5 mm <sup>2</sup> rubber cable
PF	0.9	Cable length	300mm
Light Efficiency	85lm/w(white)	Fixing clip	304 Stainless steel
Light angle	200° adjustable	Light distribution	
Cable location	From the bottom	<p>平均光束角 (50%) : 6.1度</p>	
Control way	ON-OFF /DMX512		
Environment temperature	-30°C~+35°C		