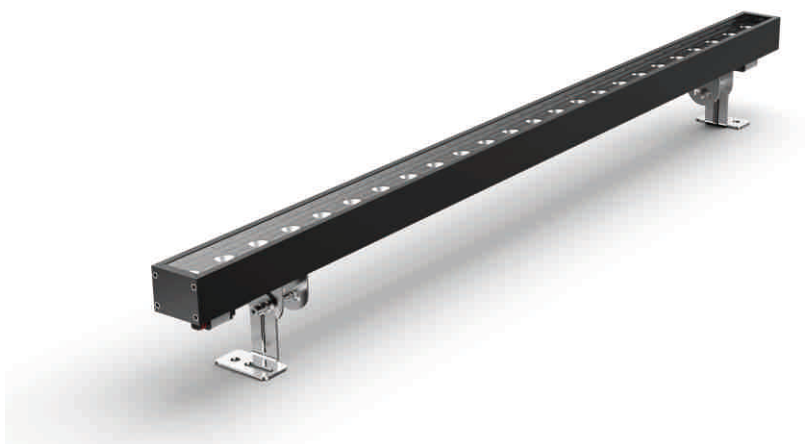
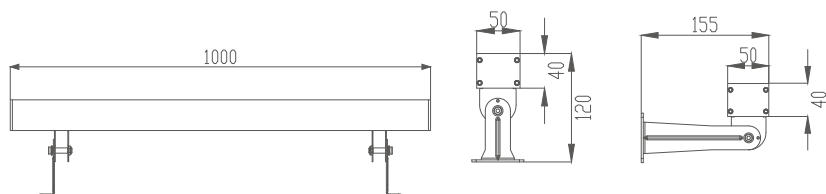


XE-50-01/LED wall washer



Size:



XE-50-01/LED wall washer

Features:

1. Minimalist lamp body with design patent conforms to modern industrial aesthetic standard
2. The whole structure waterproof adopts the new patented technology and technology of extrusion silicone strip
3. Breakthrough use of built-in 0.95 or higher efficiency DMX multi segment control system
4. Adopt the precise light distribution technology exclusive to wall washing lamp and 93% light transmittance ultra white toughened glass
5. 304 stainless steel with locking function damping rotating bracket with patented technology as standard

Parameter:

Lamp Parameter		LED parameter	
Beam Angle	10° 20° 40° 60°	LED chip	Cree
Case material/color	Aviation grade aluminum alloy(Grey)	LED Item	XTE/CLQ6A
Cover material/color	Ultra clear white tempered glass	CCT	Single color/RGBW
IP rate	IP66 structure waterproof	LED Life	2W/5W
Lamp Power	30W-60W	Other Parameter	
Input Voltage	DC24V/AC85-265V	Cable size	3 pins 1.5 mm² rubber cable
PF	0.95	Cable length	300mm
Light Efficiency	80lm/w(white)	Fixing clip	304 Stainless steel
Light angle	200° adjustable		Light distribution
Cable location	From the bottom		
Control way	DMX512/1 pixel/4pixels/6pixels		
Environment temperature	-30°C~+35°C		