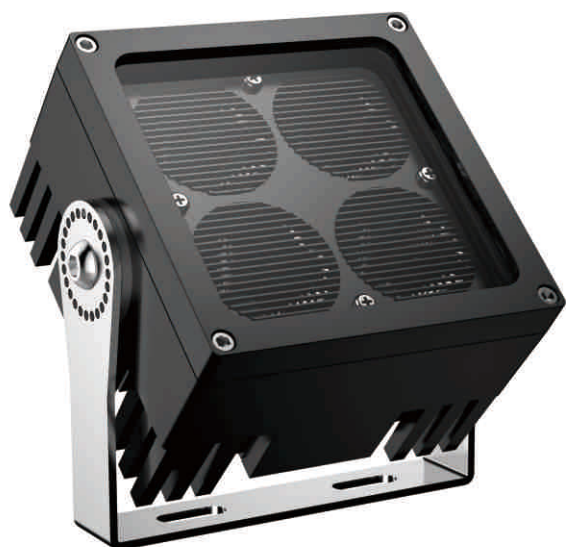
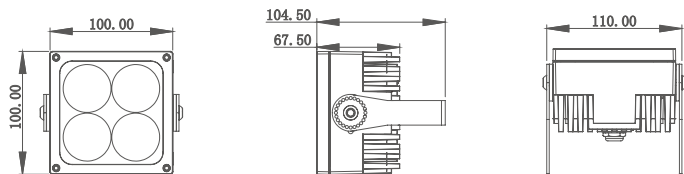


## FA-100-03/LED Flood Light



Size:



## FA-100-03/LED Flood Light

Features:

1. Mini / minimalist lamp body with design patent conforms to modern industrial aesthetic standard
2. The whole structure waterproof adopts mechanical pressure locking silica gel pad technology to ensure high and low temperature durability
3. Anti glare system adopts 0.2mm precision grid deflection 85° precision cutting light patent technology
4. Special ultra long distance precise projection technology and 93% light transmittance ultra clear glass
5. Adopt die-casting aluminum lamp body and composite metal high efficiency heat conduction patent technology
6. The lamp body adopts the unique square small column 360 degree convection and efficient heat dissipation technology

Parameter:

Lamp Parameter		LED parameter	
Beam Angle	6° 10° 20° 30° 45° 60°	LED chip	Cree
Case material/color	Dia-casting aluminum (black)	LED Item	XTE/XML
Cover material/color	Ultra clear tempered glass	CCT	Single color/RGBW
IP rate	IP66 structure waterproof	LED Power	5W/10W
Lamp Power	12W--24W	Other Parameter	
Input Voltage	DC24V/AC85-265V	Cable size	3pins 1.5mm <sup>2</sup> rubber cable
PF	0.9	Cable length	300mm
Light Efficiency	85lm/w(white)	Fixing clip	304 Stainless steel
Light angle	180°adjustable	Light distribution	
Cable location	From the bottom	<p>光通量: cd C0/180 2.9, 3.2 C90/270 3.0, 3.1 平均光束角 (50%) : 6.1度</p>	
Control way	ON-OFF /DMX512		
Environment temperature	-30°C~+35°C		